



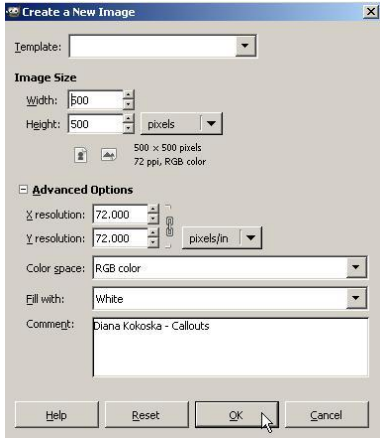
Web 2.0 Icons: Callouts

## WEB 2.0 ICONS: CALLOUTS

GIMP® is all about IT (Images and Text)

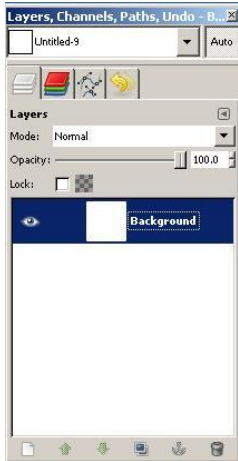
### OPEN GIMP®

**Step 1:** To begin a new GIMP® project, from the Menu Bar, select File | New. At the Create a New Image dialog box, select a size and background color for your new image. I selected 500 x 500 with a White background.




You will need to click the + sign beside Advanced Options to expand the menu. Click the Ok button.


A new canvas displays in the GIMP document window, information about the new image



displays in the Title Bar, and a layer named “Background” displays in the Layers palette.

**Step 2:** At the bottom of the Layers palette, click the Create New Layer and add to image icon  and at the Create New Layer dialog box, name the layer Callout . Click the OK button.


A new layer displays above the “Background” layer in the Layers palette.

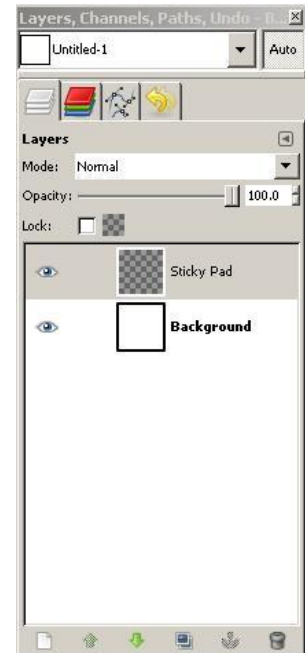
**Step 3:** From the Toolbox, select the Rectangle Select Tool . At the Rectangle Select

options, click the checkbox to the left of Rounded Corners and drag the Radius slider to 10. The higher the number the more rounded the corners become. Move the cursor on the image canvas and draw a rectangle with a width of 200 pixels and a height of 100 pixels. Notice that the pixel dimensions display below the image canvas.

**Step 4:** In the Toolbox select a brownish red (I selected 9d0707) for the FG color and white for the BG color.



**Step 5:** From the Toolbox, select the Bucket Fill tool  and click inside the rounded rectangle to fill it with the FG color.

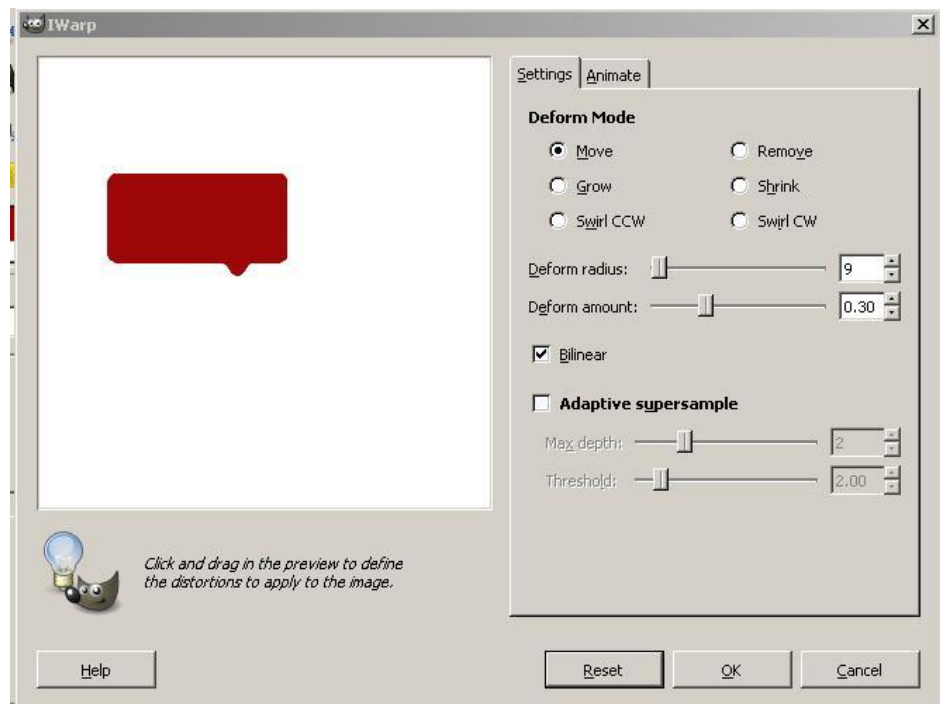




**Step 6:** From the Menu bar, click Select | None to remove the *marching ants*.

**Step 7:** You will use the IWarp tool to draw the callout. On the rectangle, you will place the callout on the bottom right.

From the Menu bar, select Filters | Distorts | Iwarp. At the Iwarp dialog box, set options as shown above and click and drag part of the image to form a triangle.



**Note:** If you make a mistake, you can click the Reset button to clear the triangle and start again.

When you have the shape you want, click the OK button.

**Step 8:** Now you will add the text to the callout face using a white font. You will select a font face using the View as Grid option at the bottom of the text. I selected the Lucida Handwriting Italic font face and an 18 point font size.


*Download*  
the GIMP Graphic  
Editor




After typing the first line, click the Close button. Click the Text Tool again and select an Arial Bold 20 px and type the next two lines – you will need to enter where you want the second line to begin. Click the Close button when you are finished.

**Note:** If you would like to add the ® trademark symbol after the GIMP®, you can open Microsoft Word and type (r) to display a registered trademark and then copy and paste the symbol into GIMP®.

**Step 9:** If you need to position the text, click the text layer in the Layers palette, click the Move Tool in the Toolbox, and drag the layer to position it.

**Step 10:** From the Toolbox, click the Crop Tool  and drag a rectangle around the callout image. Click in the center to accept the crop.

**Step 11:** Save the image in the  
`\PortableApps\GIMP\Icons\Images` folder as  
`icon_callout_mm_dd_yy.xcf`.

**Step 12:** In the Layers palette, select the  
Visibility icon  beside the "Background" layer  
to remove the white background and make the  
image transparent.



**Step 13:** Save the image again with the same name in the same  
folder with a `.gif` or a `.png` extension.